

## Step 3 – Setting the Photographers name and Image Title

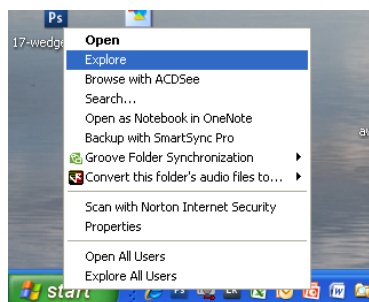
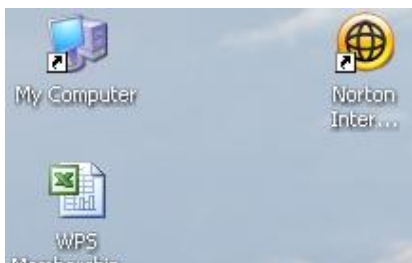
Due to the software we are using for DPI competitions it is **essential** that your images are saved with the photographers (authors) name and image title embedded in the file information. Don't be scared - this is very easy to do. **However if you don't do it, the software will not recognise your image and it will not be included in the competition!**

There are 2 methods to add this information to your images. Either is equally acceptable. Option 2 may be easier. Option 1 is not available when using Windows Vista - and also sometimes under Windows XP.

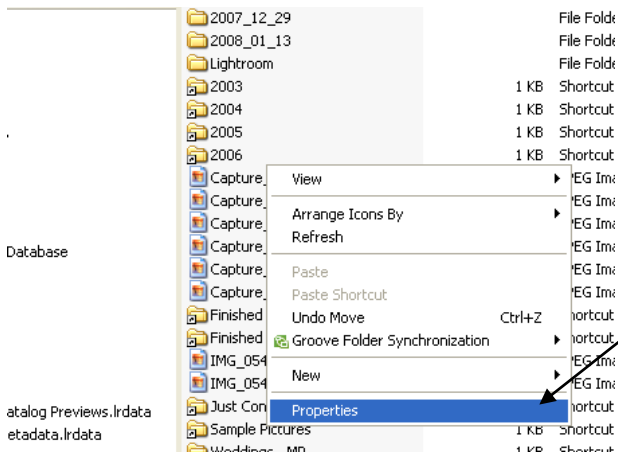
**Option 1,** (This applies to Windows XP and Windows 7 only – for Vista users, please use option 2)

(See the end of this section for the Windows 7 naming method)

Open up Windows Explorer by either clicking on the “My Computer” icon on the desktop OR right clicking the “Start” button and selecting “Explore”



Navigate to where you have saved your image and right click on the file. Then left click on “Properties”

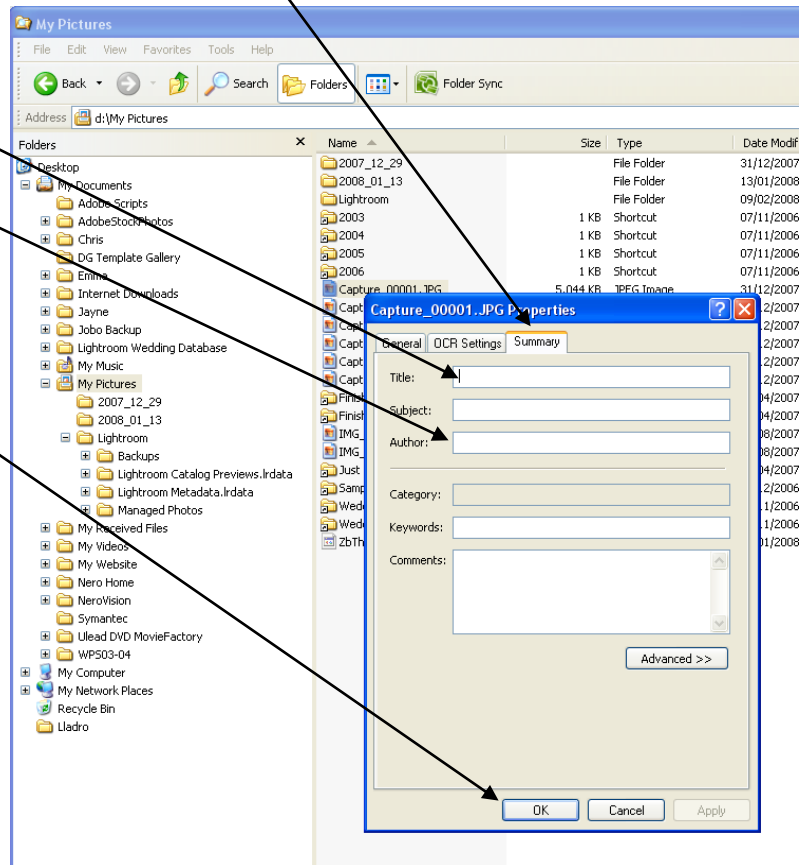


The “Properties” dialogue box will open up - and then click the “Summary” tab.

Enter the title of your image here

Enter your name in the “Author” box here

Then click “Apply” and then “OK”



The DPI projection software will now recognise your name and the image name.

**In Windows 7 simply right click on the file name and select Properties > then the “Detail” tab - and fill in the Title and Author boxes in the Details box**

## Option 2, Open your image in Photoshop (or keep it open from the previous step)

Click “File” and then “File Info”

In the dialogue box that opens:

Enter the image title here

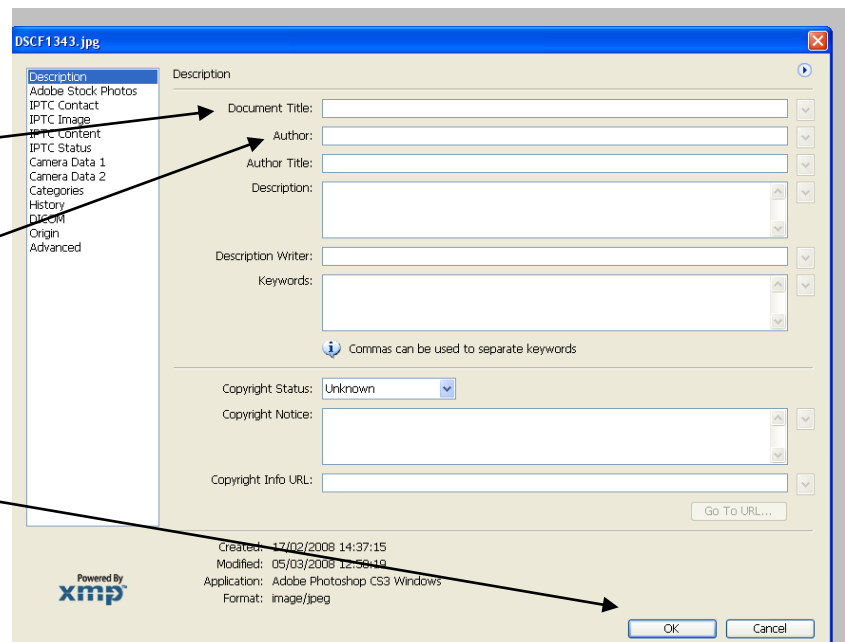
In the “Document Title” Box

Enter your name here

In the “Author” box

Click “OK”

Then close your image



## Step 4 – Assign the Colour Space

Our projector is configured to show images in the sRGB colour space. Therefore we advise to submit your images in this format.

To assign the sRGB profile to your image in Photoshop, simply:

- Open the image in Photoshop
- Edit > Assign Profile
- If sRGB is already set as the working profile (i.e. the radio button next to it is highlighted) – then your image is already in sRGB. Just click OK. Nothing else to do.
- Otherwise: Click the Profile button and select “sRGB IEC61996-2.1” from the drop down menu.
- Click OK – and the image will now display in sRGB and have the profile embedded in the file.
- If you need to do any tweaks - which will normally be for contrast and saturation – do them now and then save the file.

I’m sure you can assign profiles in other image editing packages too, however I’m afraid it’s up to you to find out how to do it.